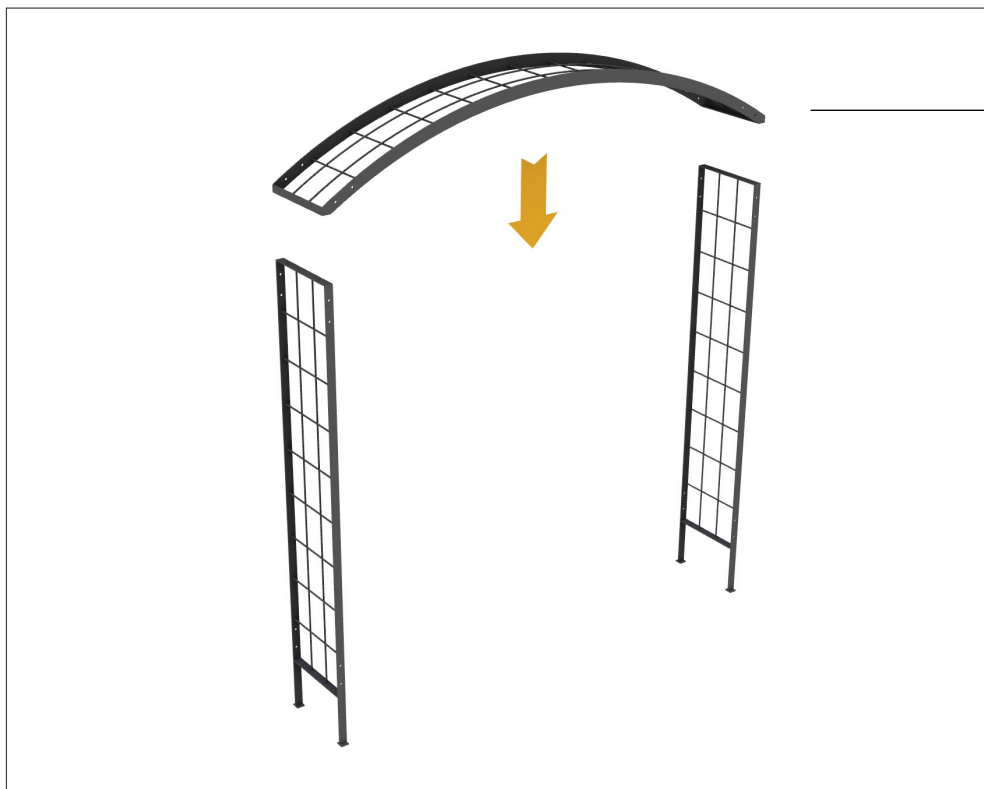
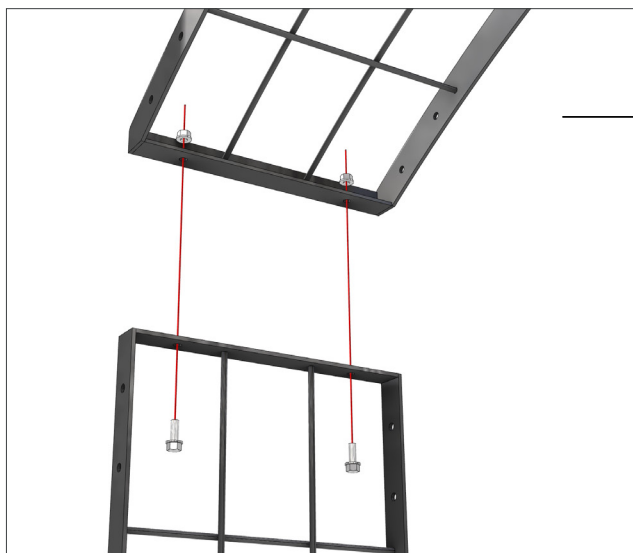


LAGERSTRÖM
ANDRE DESPORTES Spaljé Portal
CAST WITH CONCRETE ON SITE
Mounting instructions



01.

Place the top arch on the
2 side frames.

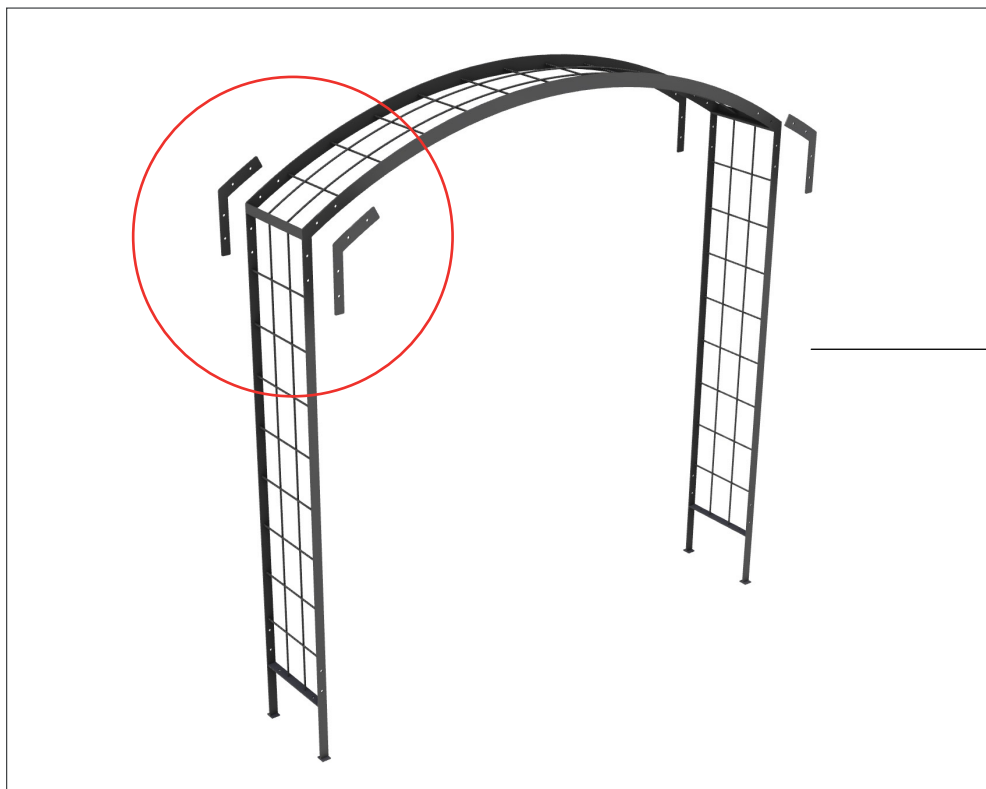


02.

Connect the arch to the side
frames with bolts, nuts and
washers as seen in the images.
2 bolts on either side of the
portal.

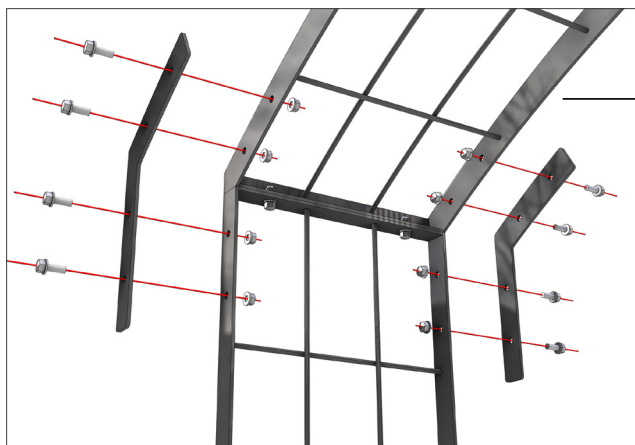


LAGERSTRÖM
ANDRE DESPORTES Spaljé Portal
CAST WITH CONCRETE ON SITE
Mounting instructions



03.

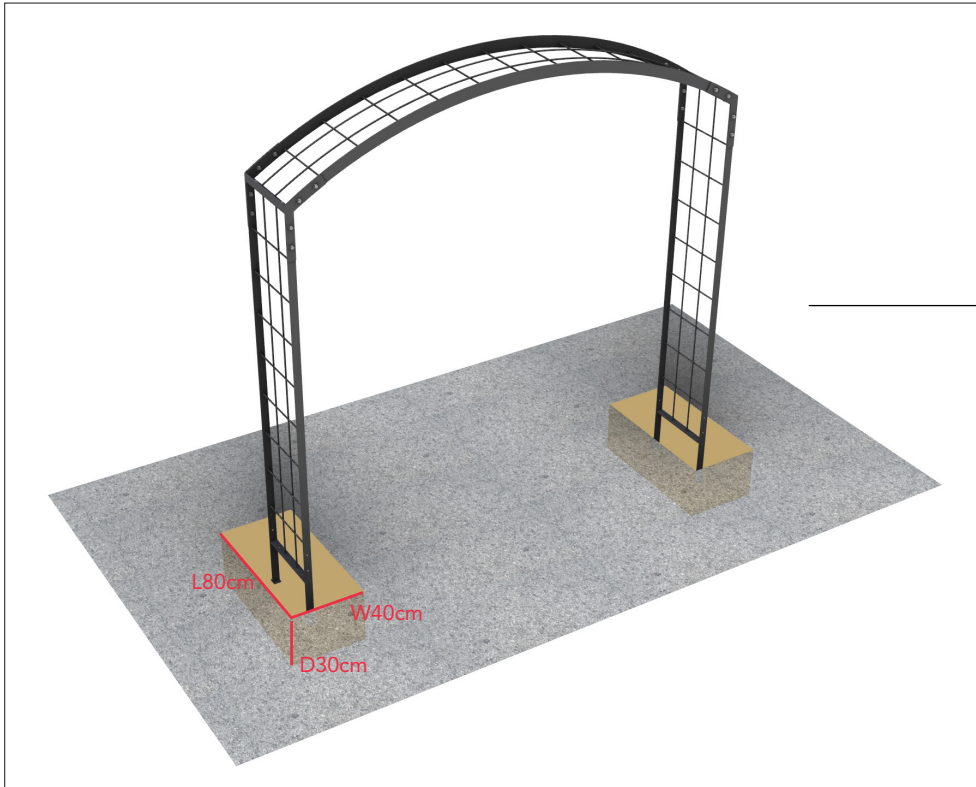
Next, the corner support pieces shall be attached to add stability to the structure.



Connect the corner braces to the side frames with bolts, nuts and washers as seen in the images.
4 bolts on every support piece. In total 16 bolts.



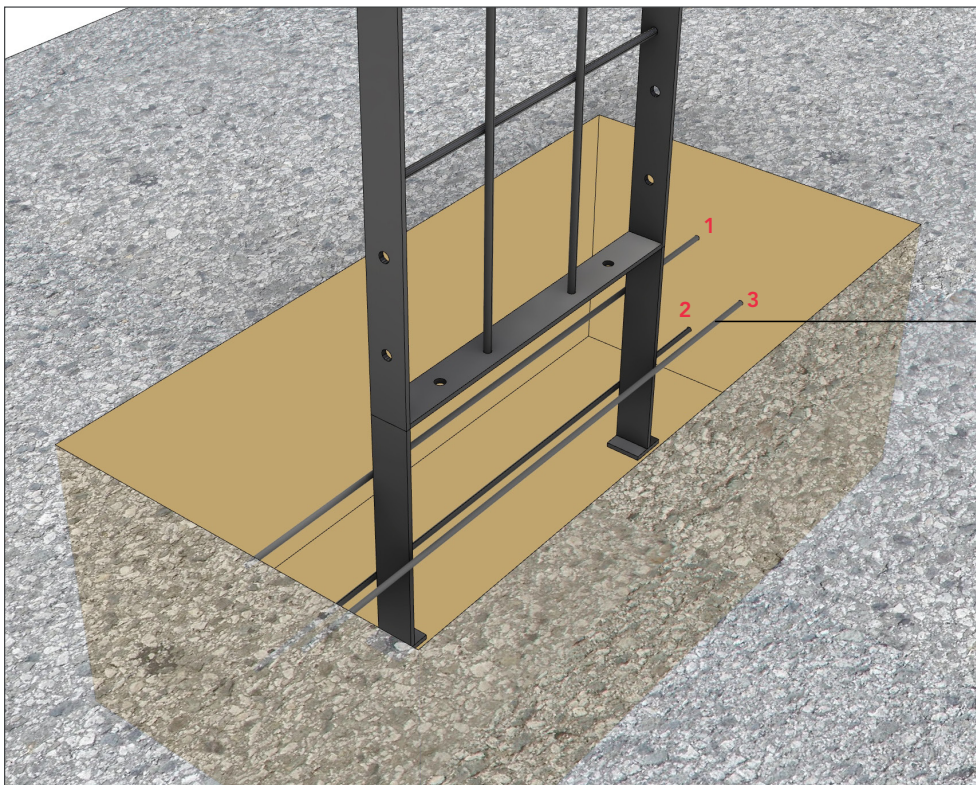
LAGERSTRÖM
ANDRE DESPORTES Spaljé Portal
CAST WITH CONCRETE ON SITE
Mounting instructions



04.

Prepare 2 casting pits with the dimensions : L80 W40 D30cm

Center the pits in relation to the position of the side frames (this distance varies with different portal models)

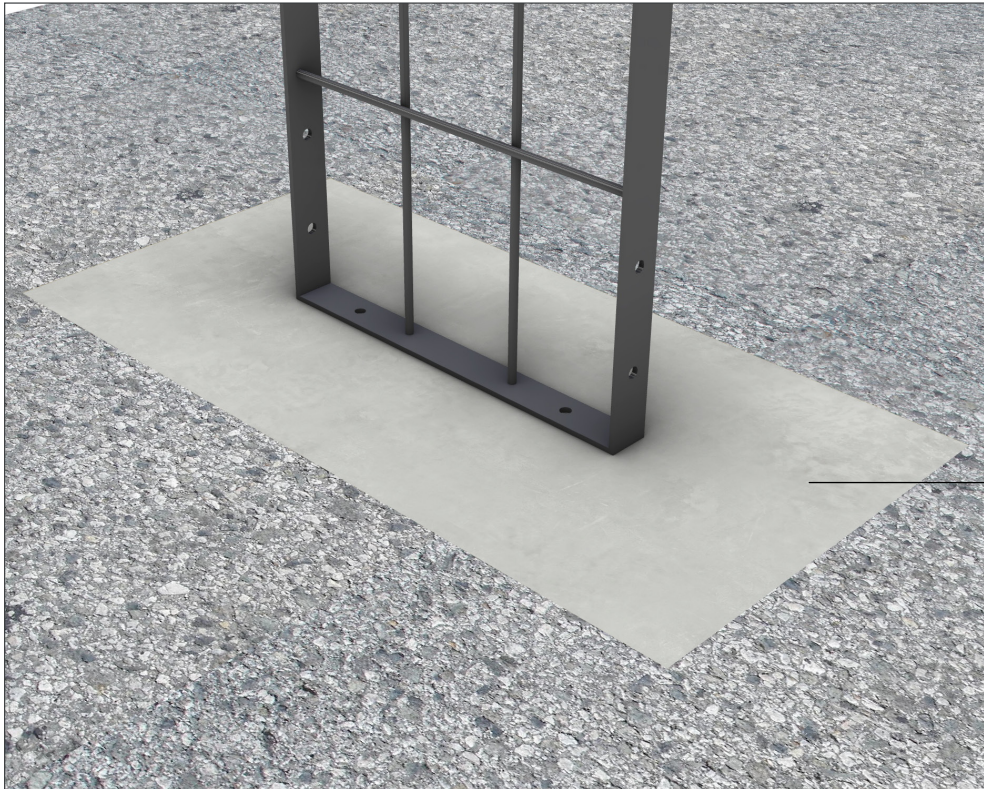


05.

Connect with wire **on each side** 3st L70cm dia. 6mm rods to the underground frame extensions. This is to strengthen the concrete cast and make it armoured.

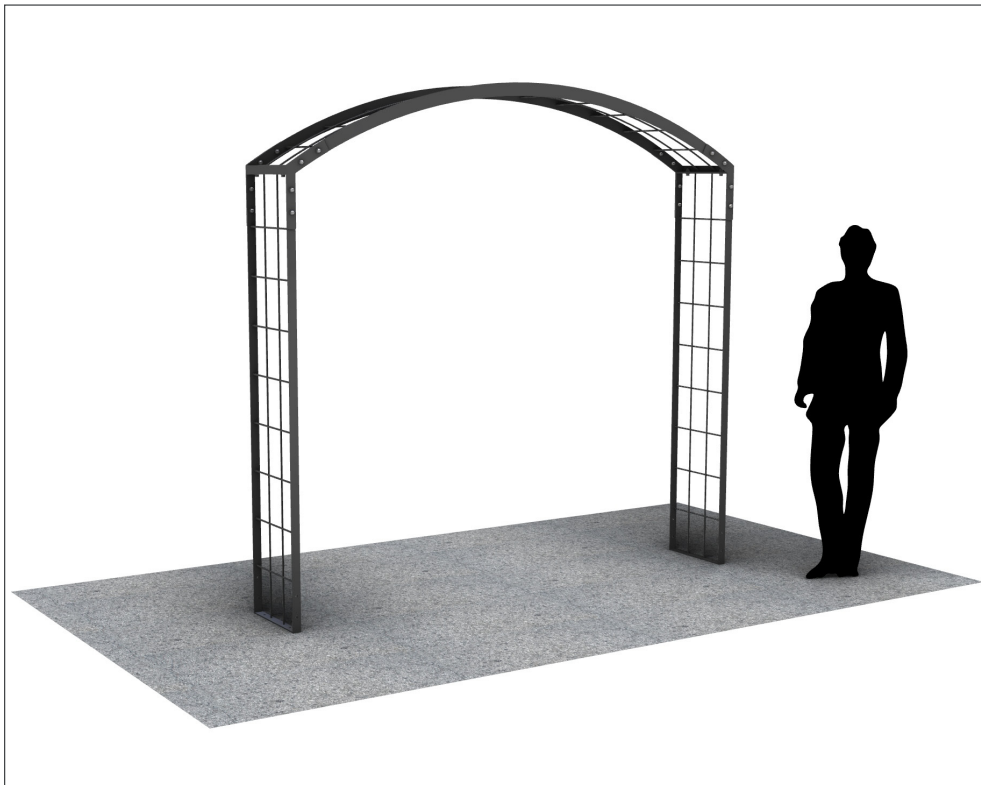
Use Temporary supports to position the portal for the concrete casting. Make sure the side frames are vertical and that the bottom side of the spalje is aligned with the ground level.

LAGERSTRÖM
ANDRE DESPORTES Spaljé Portal
CAST WITH CONCRETE ON SITE
Mounting instructions



06.

Fill the pits with concrete to ground level. Let it set.



Cover the concrete cast with soil or gravel.

The portal is fully mounted.