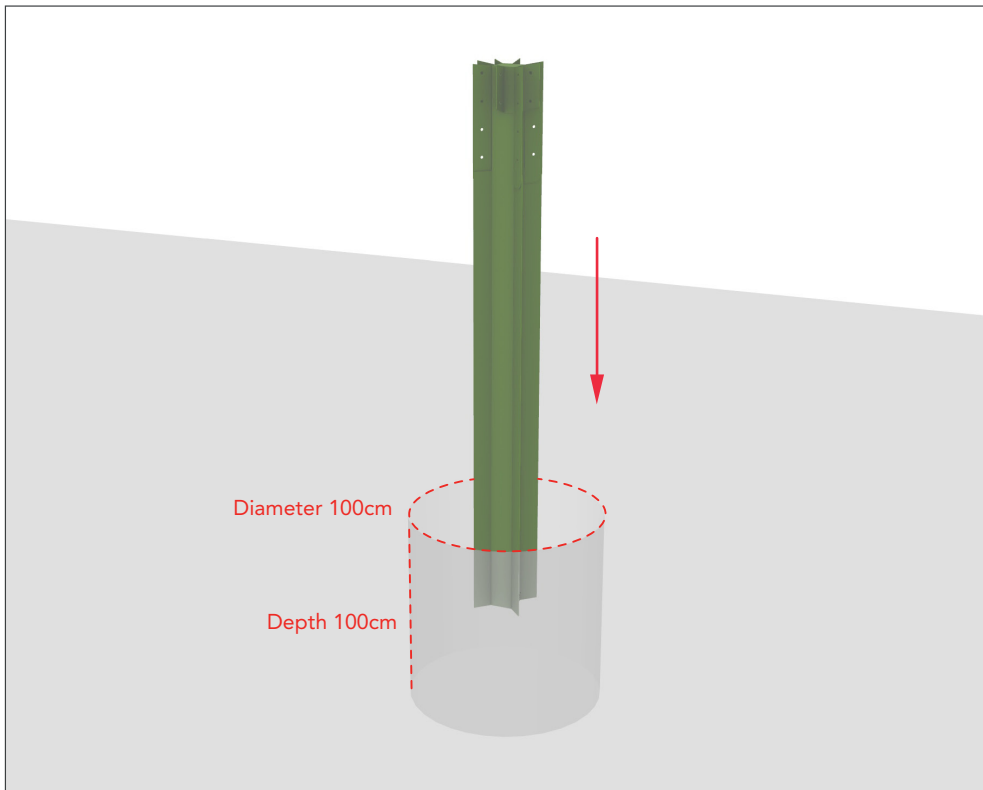
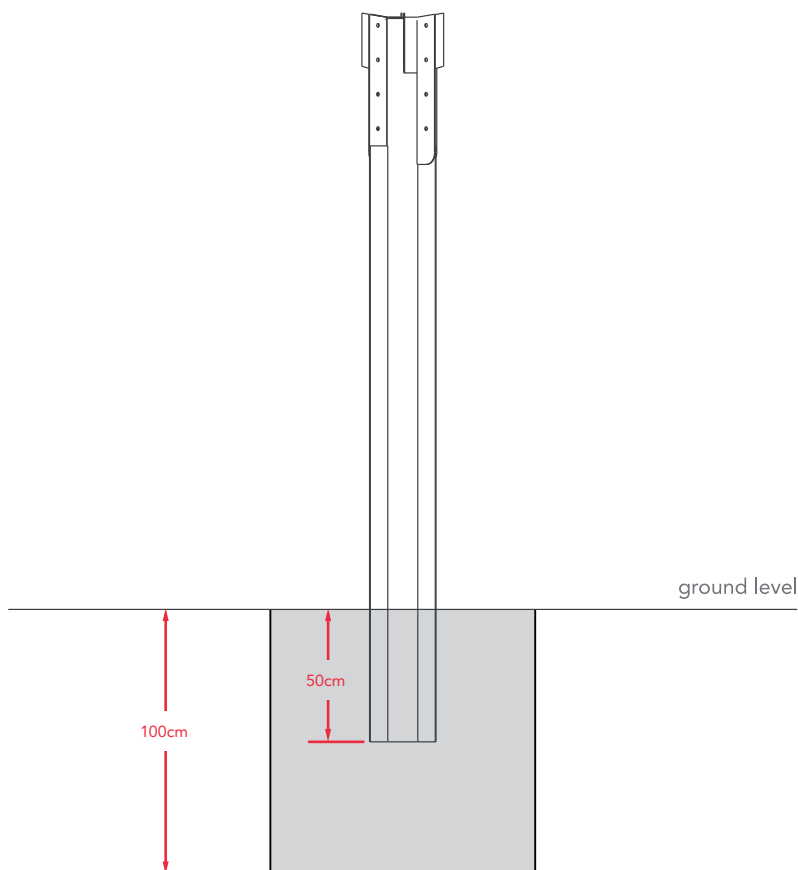


LAGERSTRÖM
AVENA parasol
Mounting instructions



01.

Place the main post in a hole in the ground with the minimum dimensions :
Diameter 100cm, Depth 100cm.



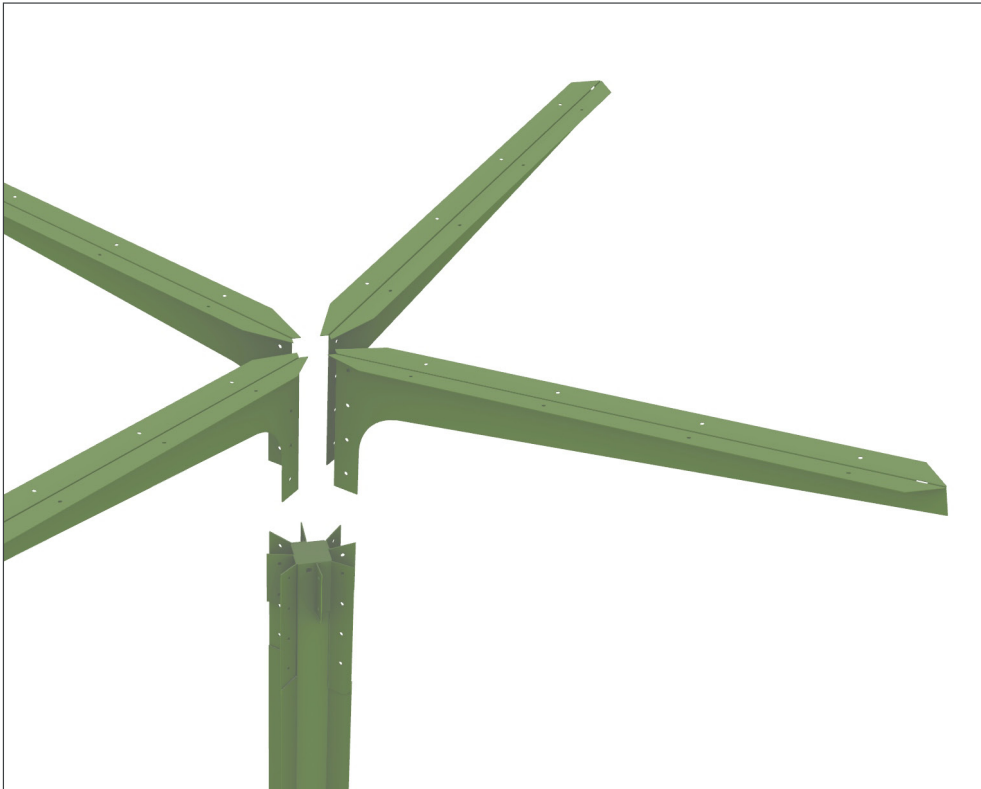
02.

Cast the post with concrete 50cm deep from ground level.

(Post height over ground level varies between models)

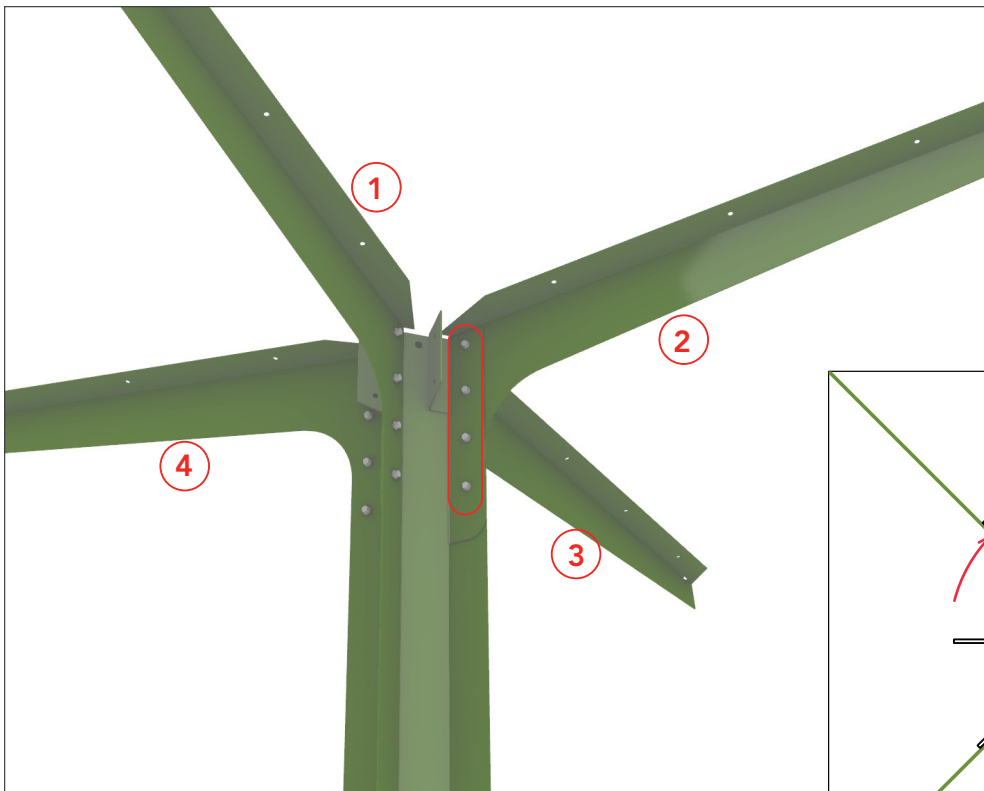
IMPORTANT!
Make sure the sides of the square central post are aligned with how you want the parasol to be placed.

LAGERSTRÖM
AVENA parasol
Mounting instructions



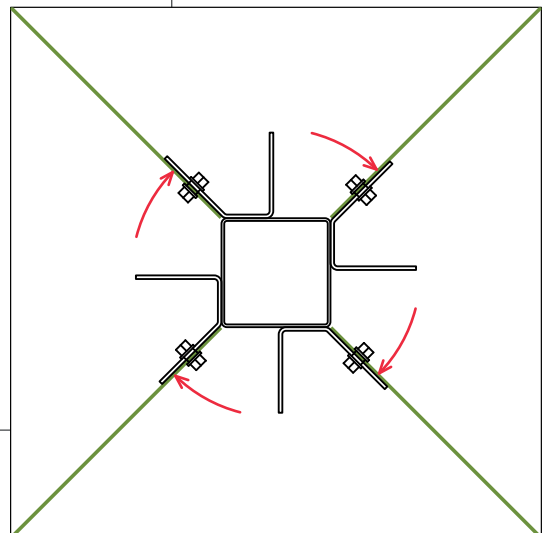
03.

Attach the 4 **corner** roof branches (the longer ones) to the post.

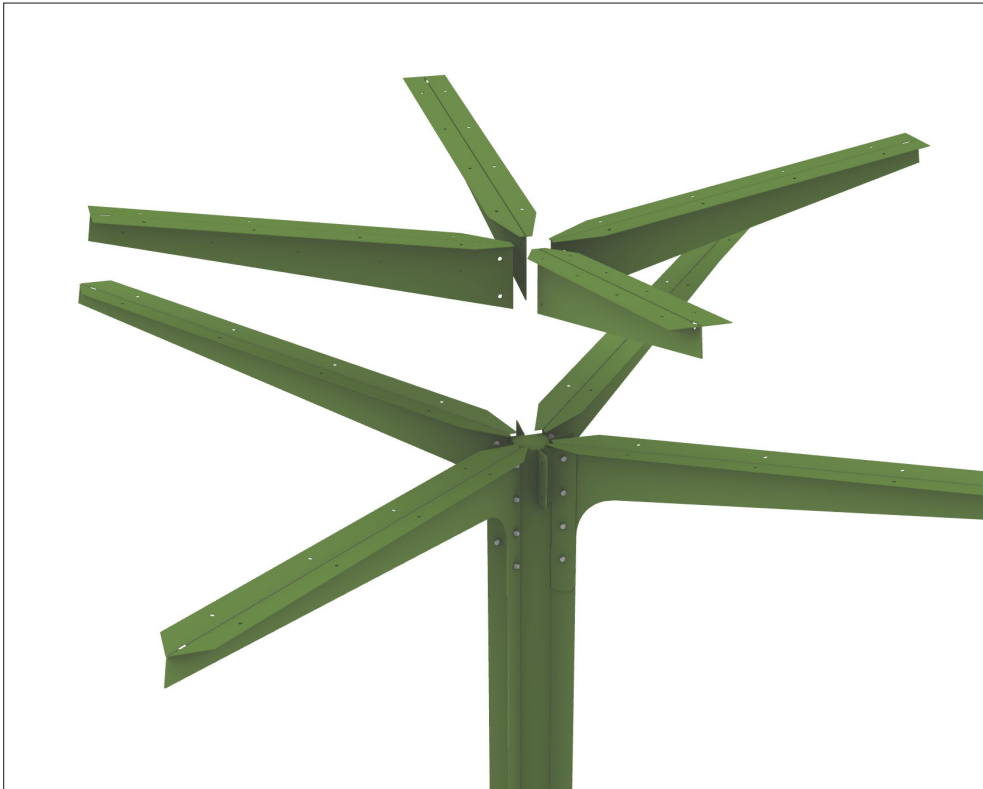


Fasten each branch with 4st M12x25 bolts, nuts and washers as shown in the picture.

IMPORTANT!
The branches must be attached on the correct side of the post ribs. See the direction of mounting in the illustration below : (top view section)

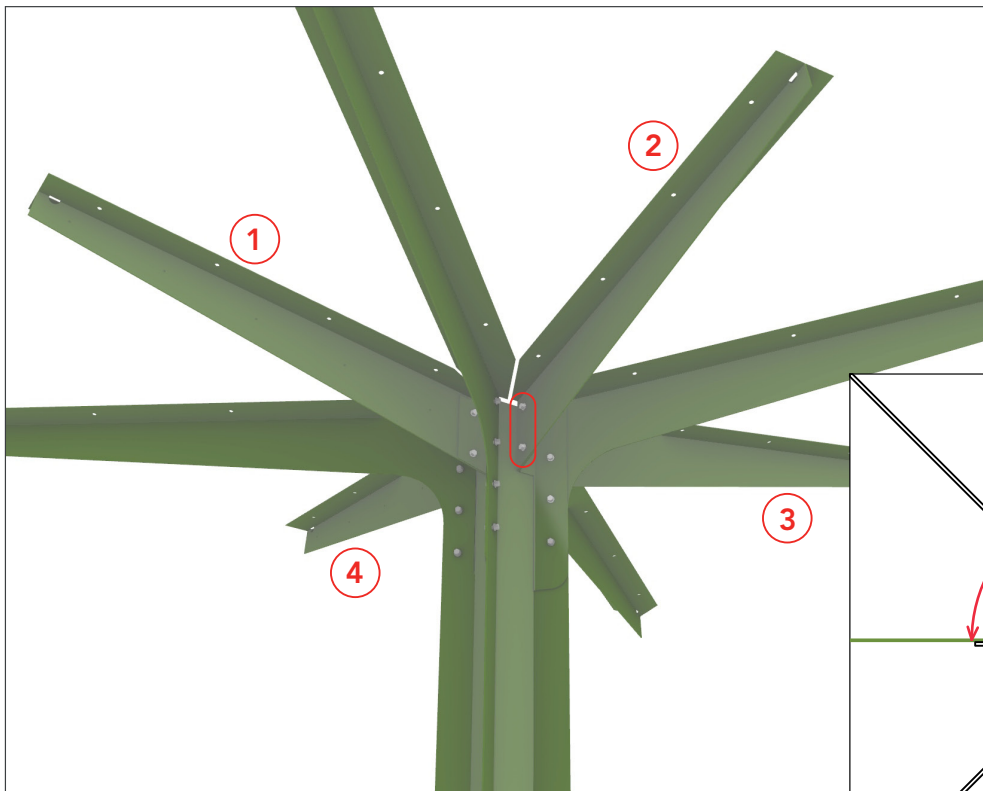


LAGERSTRÖM
AVENA parasol
Mounting instructions



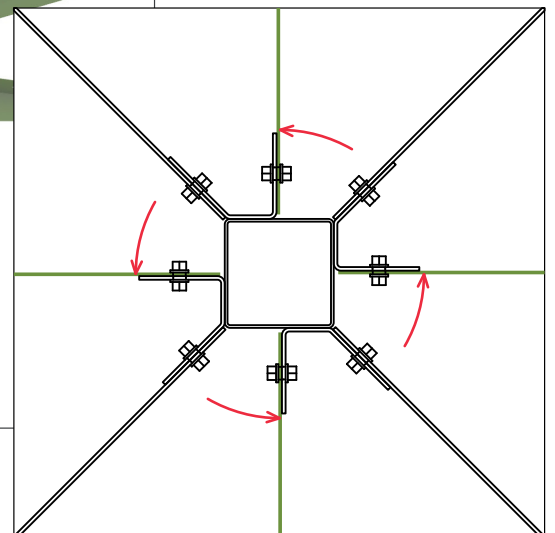
04.

Attach the 4 **central** roof branches (the shorter ones) to the post.

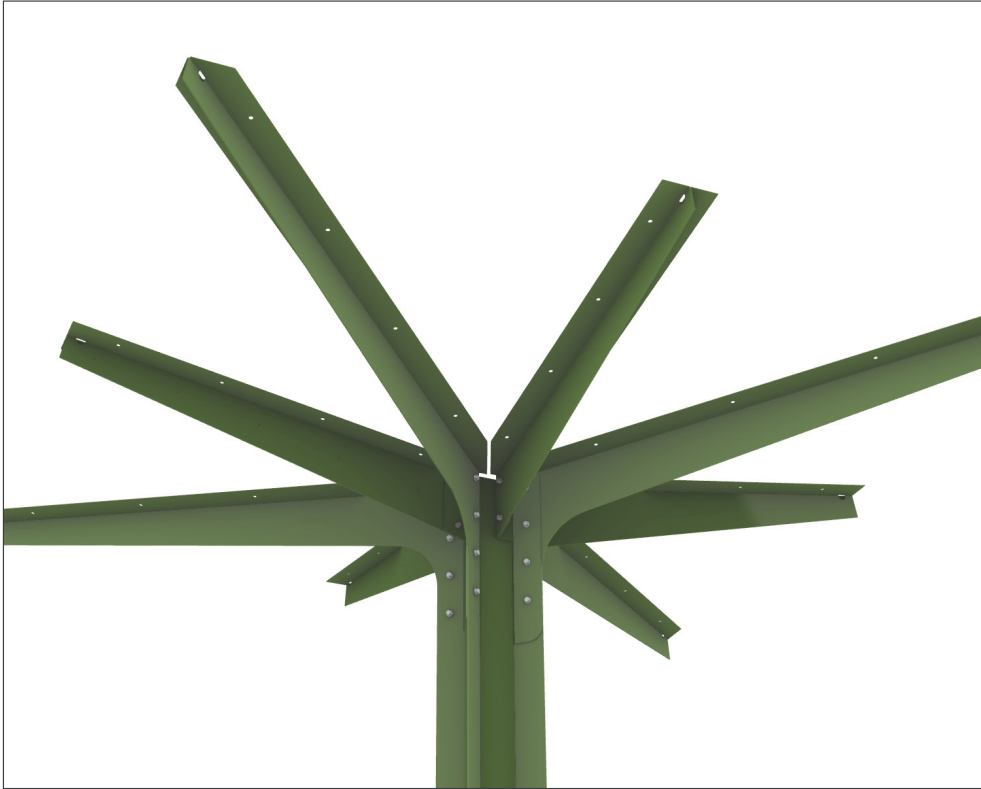


Fasten each branch with 2st M12x25 bolts, nuts and washers as shown in the picture.

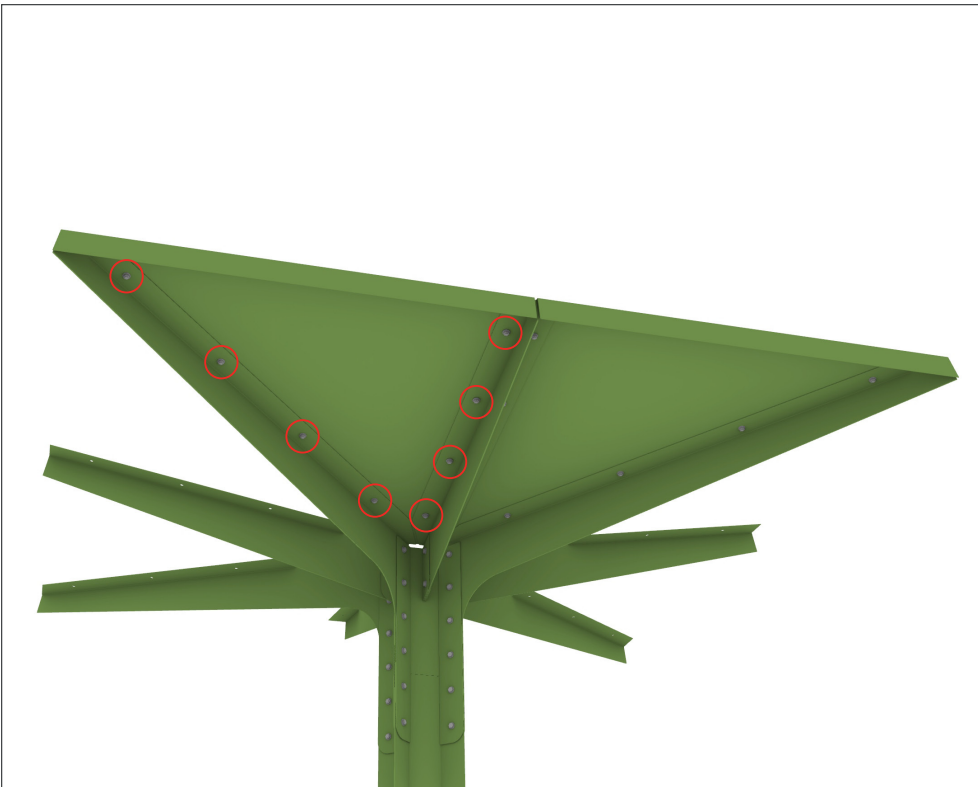
IMPORTANT!
The branches must be attached on the correct side of the post ribs. See the direction of mounting in the illustration below : (top view section)



LAGERSTRÖM
AVENA parasol
Mounting instructions



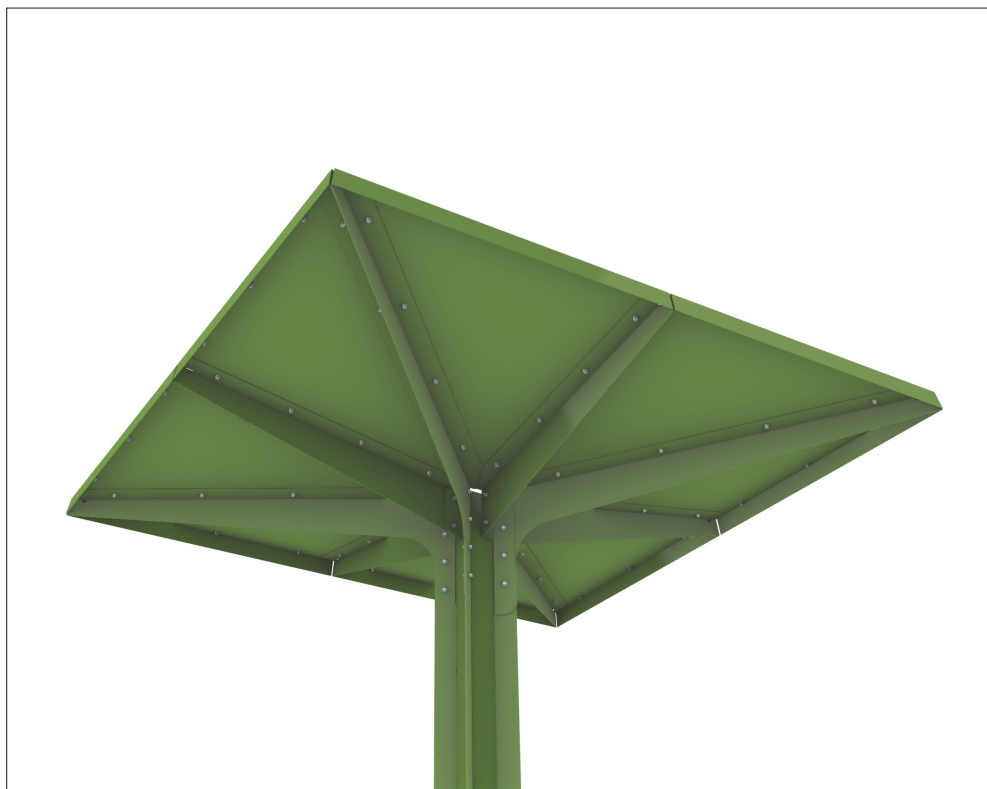
All 8 branches are connected to the main post.



05.

Place the right and left roof sections on the branches as shown and fasten each roof segment with 8st M10 bolts, nuts and washers.

LAGERSTRÖM
AVENA parasol
Mounting instructions



06.

Place all the roof sections
and connect with M10
nuts and bolts.

