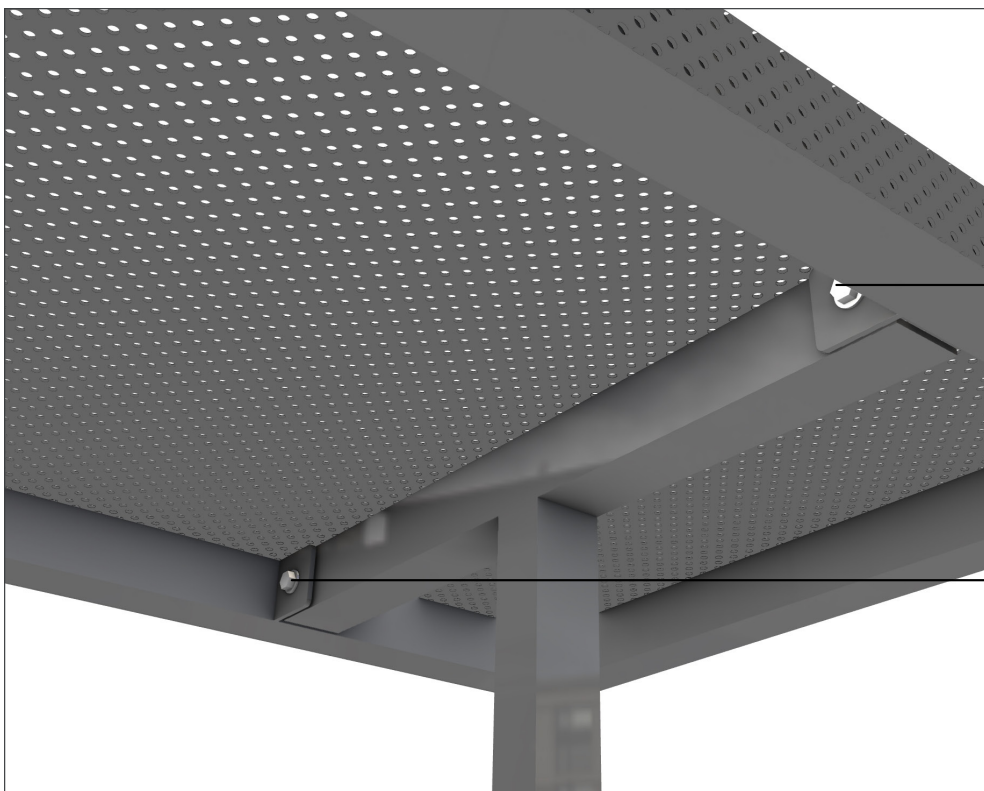


LAGERSTRÖM
CZAR Table C2
Mounting instructions



01.

Place the tabletop over the leg structure.

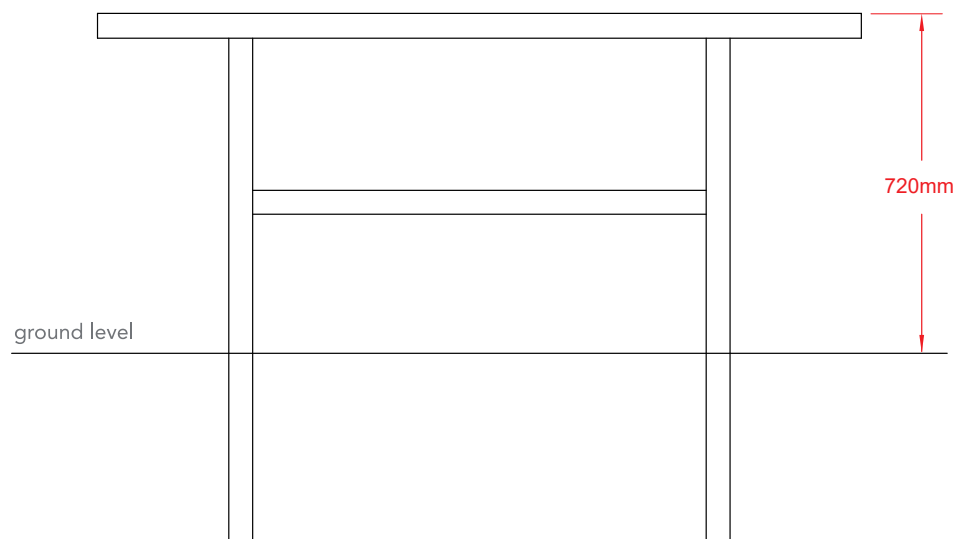


02.

Use 4xM8 bolts, nuts and washers to connect the tabletop to the leg structure.

LAGERSTRÖM
CZAR Table C2
Mounting instructions

Tabletop
height



03.

Cast the table in the chosen position, so that the tabletop height is 720mm over the ground level.

Make sure the tabletop surface is horizontal in the side and front view.

See illustration.

