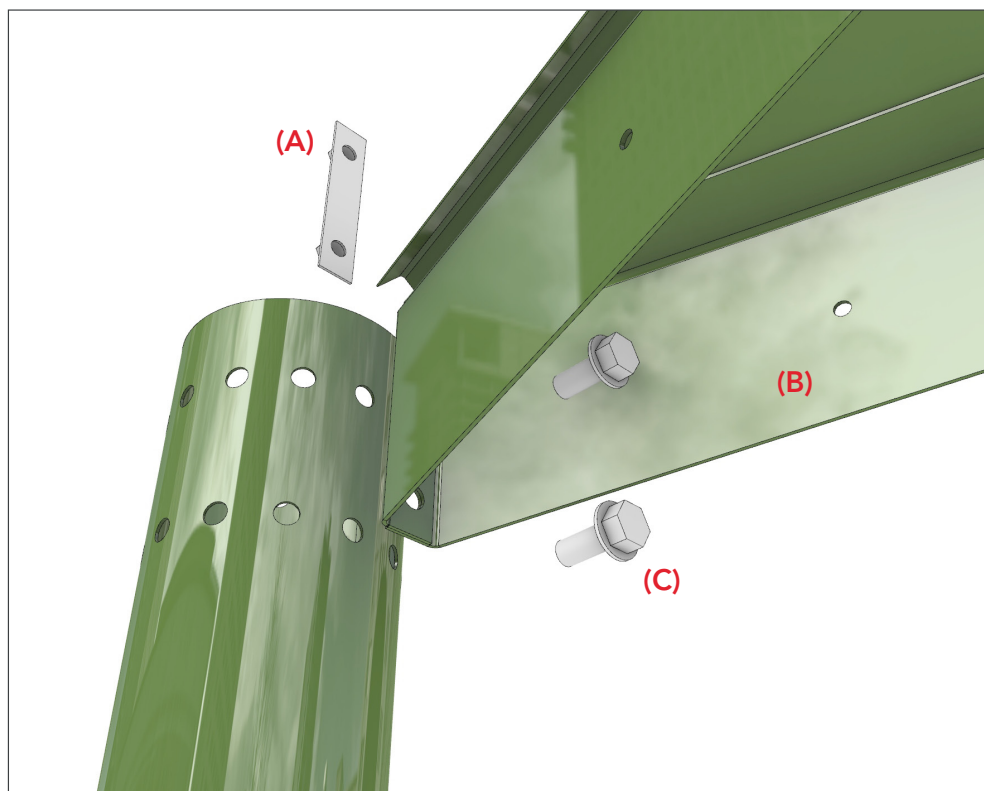


LAGERSTRÖM
MEUM parasol
Mounting instructions

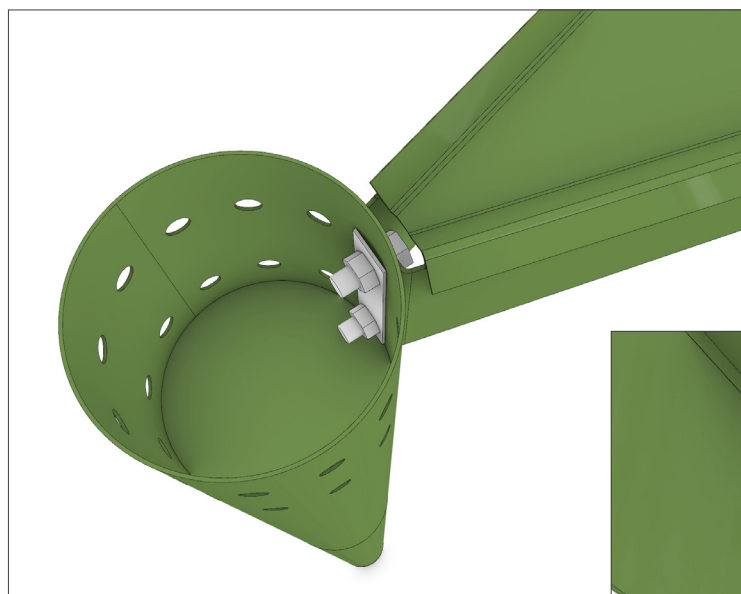


01.

Canopy segment attachment:

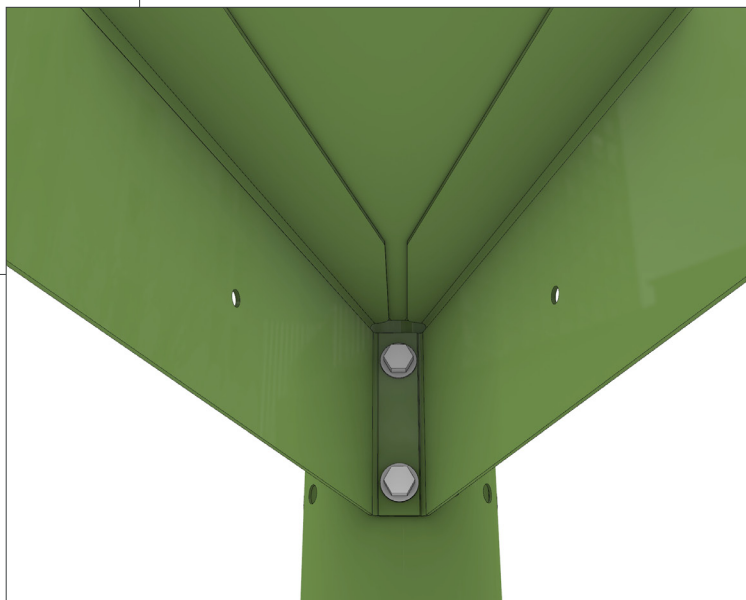
Take a flat iron connector (A) and place inside the post. Place a canopy segment (B) aligning the connection holes in the roof segment with the holes in the post. Take 2st M12 bolts (C) and connect the segment to the post.

NOTE! Do not fully tighten the bolts to the nuts. Do this when all the segments are attached to the post.

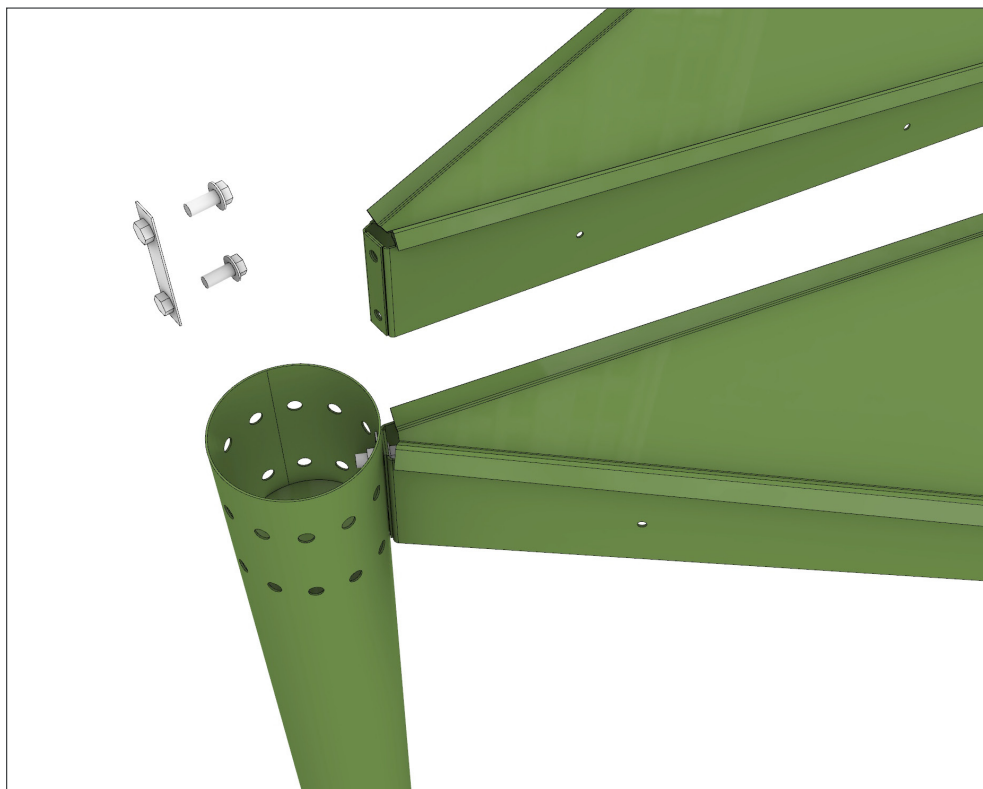


02.

Images show the first segment mounted to the post, using the 2 bolts and the flat iron connector.

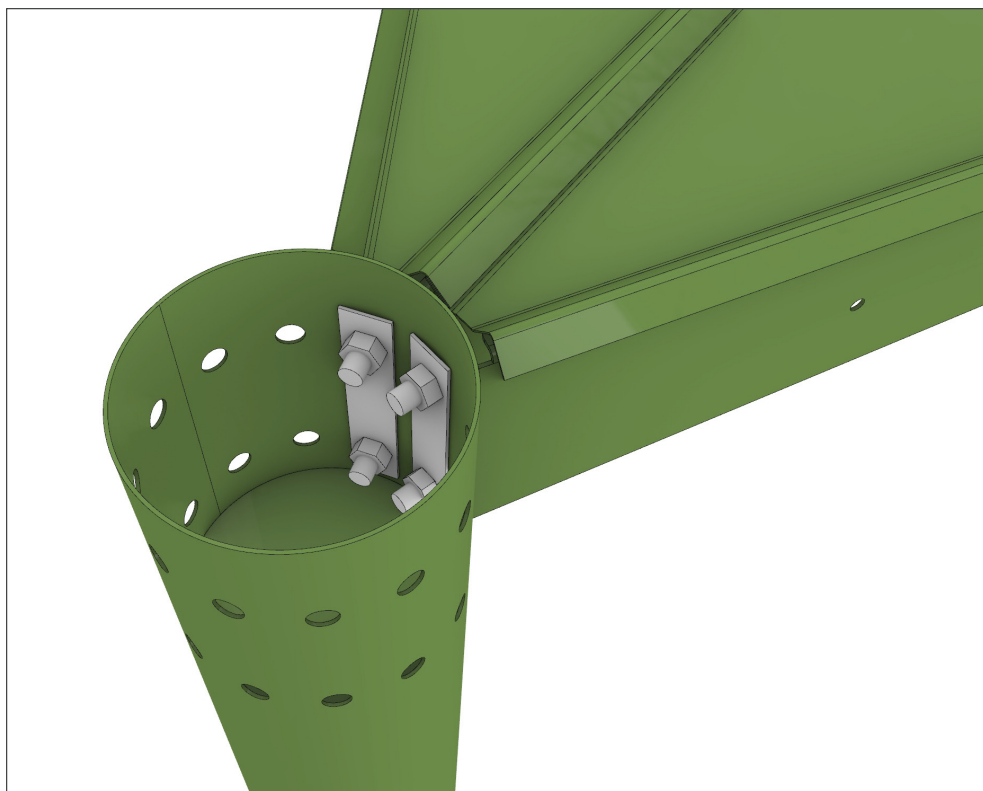


LAGERSTRÖM
MEUM parasol
Mounting instructions



03.

Prepare another flat iron connector, canopy segment and 2st M12 bolts.



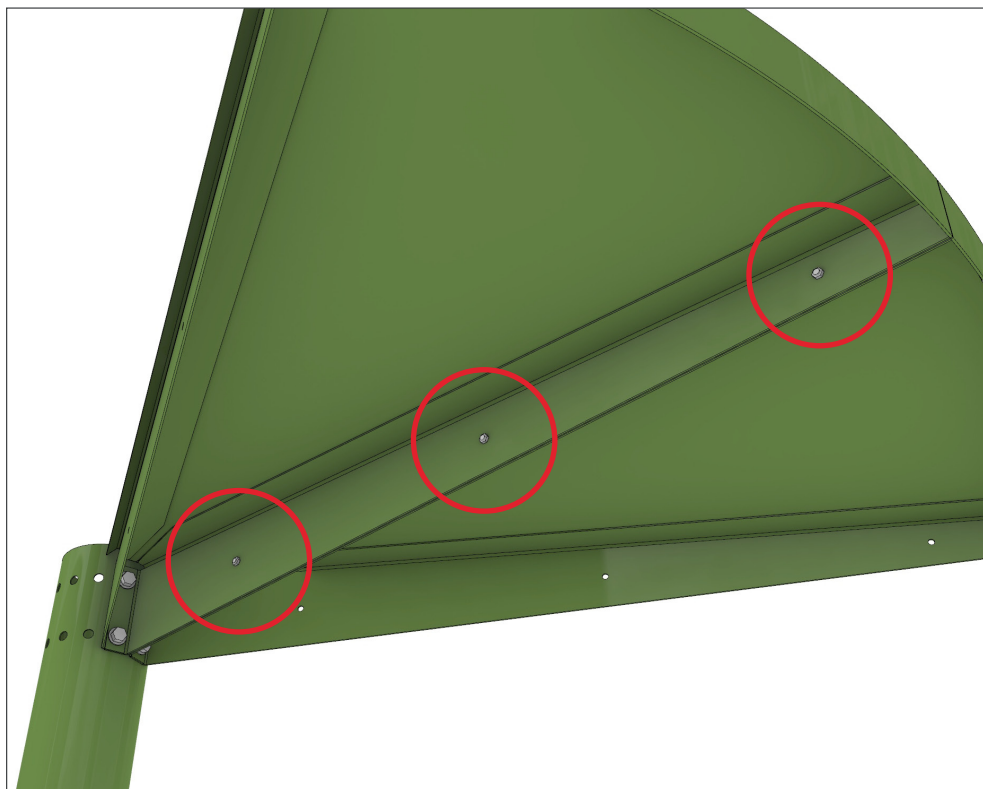
04.

Repeat a segment attachment :

Take a flat iron connector and place inside the post. Place a canopy segment aligning the connection holes in the roof segment with the holes in the post. Take 2st M12 bolts and connect the segment to the post, next to the first segment.

NOTE! Do not fully tighten the bolts to the nuts. Do this when all the segments are attached to the post.

LAGERSTRÖM
MEUM parasol
Mounting instructions



05.

Attach the segments to each other with 3st M8 nuts, washers and bolts.

See illustration.

NOTE! Do not fully tighten the bolts to the nuts. Do this when all the segments are attached to the post.

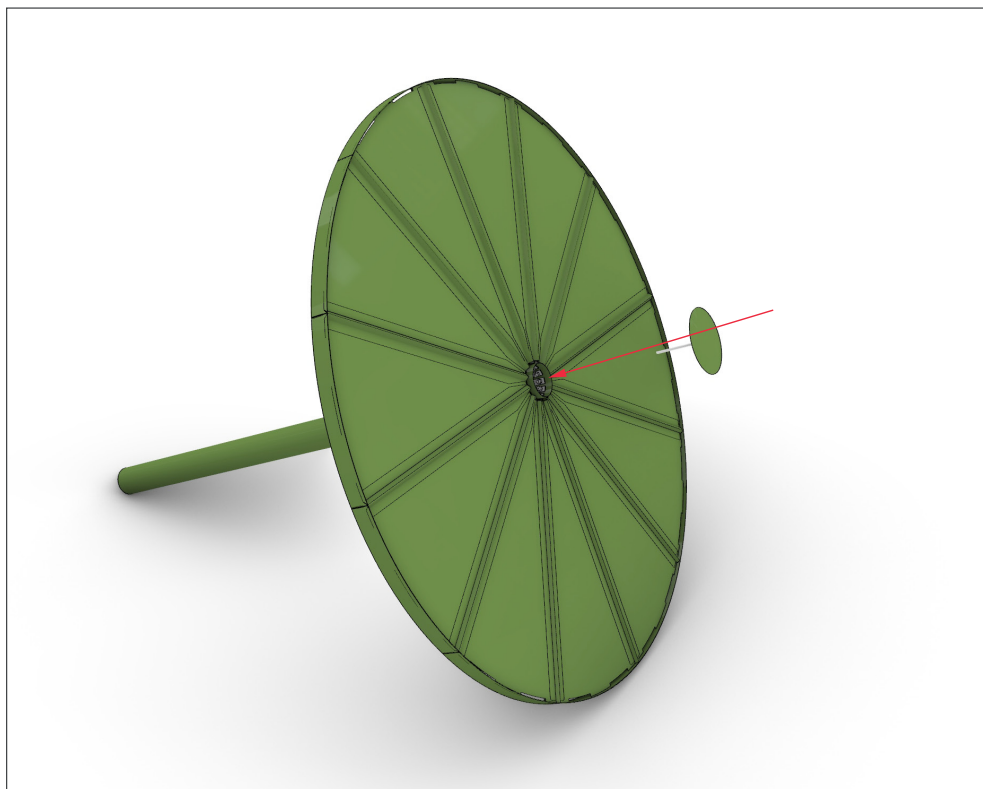


06.

Proceed to attach all the canopy segments. Connect all the segments to each other with the M8 nuts, and bolts.

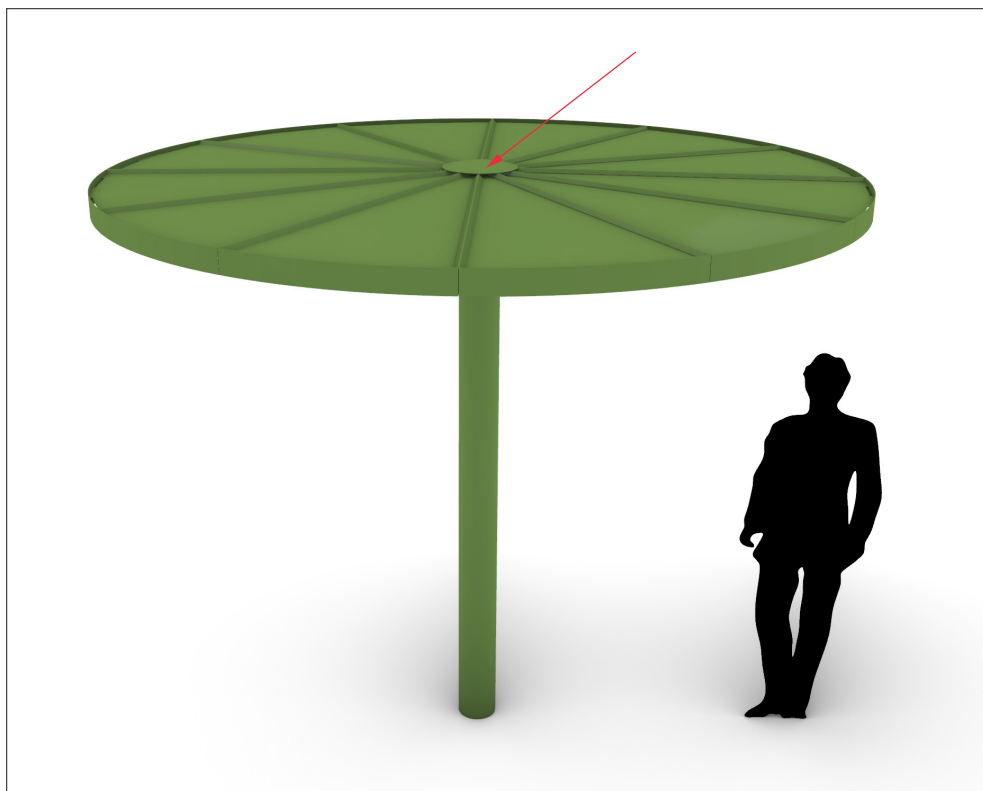
When all the segments are attached to the post, fully tighten the bolts to the nuts.

LAGERSTRÖM
MEUM parasol
Mounting instructions



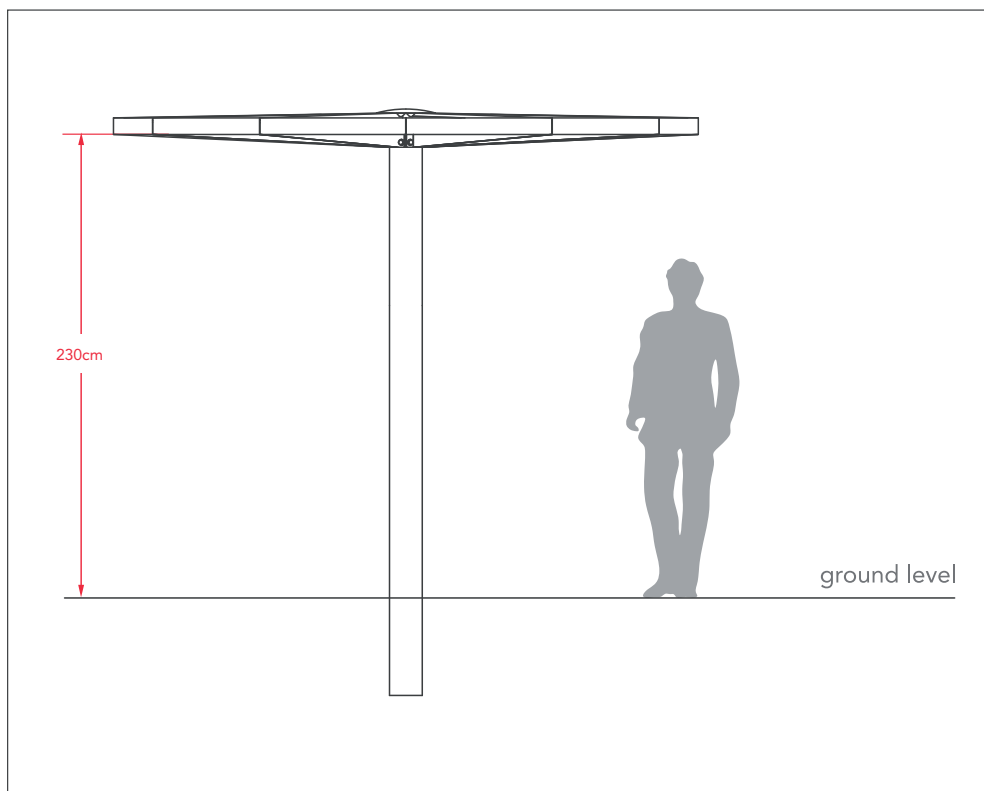
07.

Carefully lay the parasol on its side and screw into position the dome post cover.



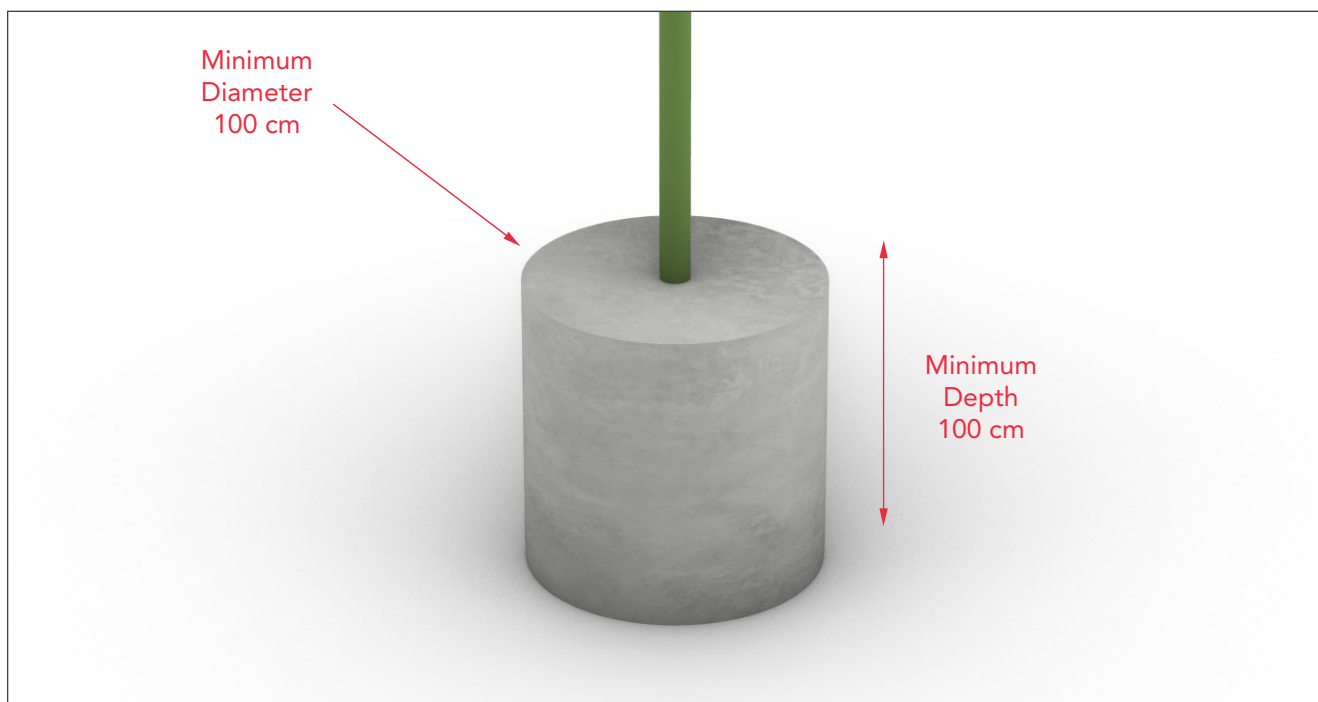
The dome post cover,
Screwed into position.

LAGERSTRÖM
MEUM parasol
Mounting instructions



08.

Cast the parasol into the ground. Make sure the under side of the outer edge of the canopy is 230cm over the ground level!
(as shown in illustration)



IMPORTANT!

To ensure safety and stability it's important to cast the post so that the concrete foundation is at least 100cm in diameter and 100cm deep. The post should reach 50cm under ground level.

LAGERSTRÖM
MEUM parasol
Mounting instructions



Illustration of the mounted parasol.