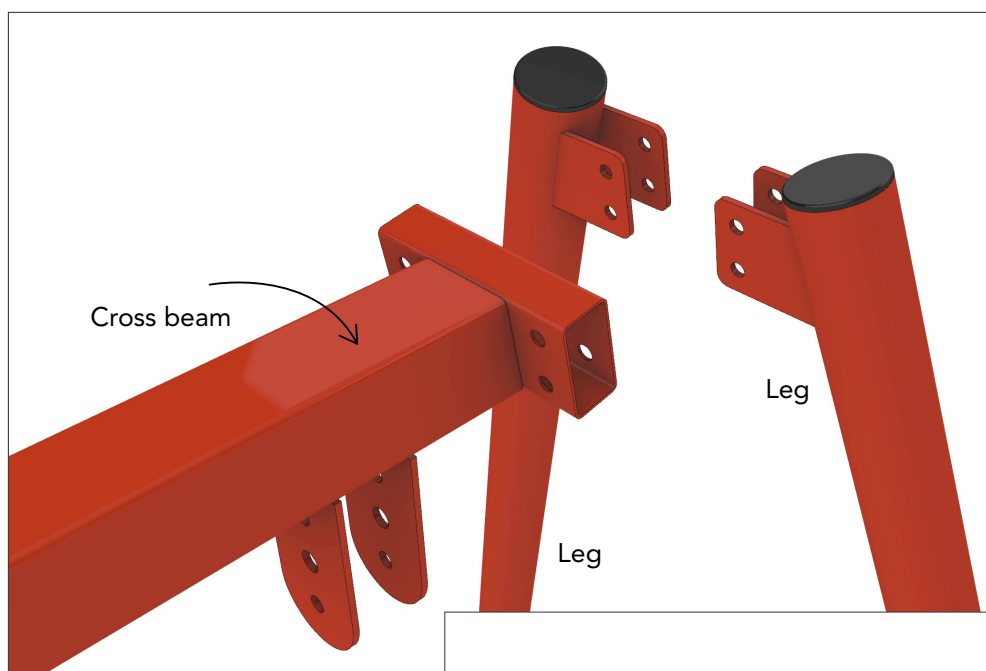


**LAGERSTRÖM**  
OCILLA HAMMOCK 9200A  
Mounting instructions



01.

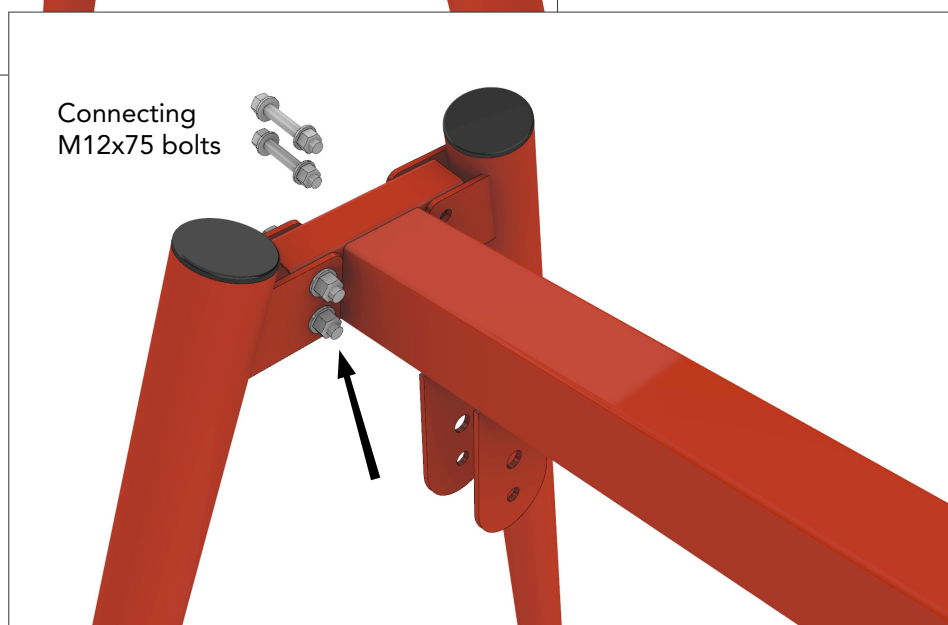
**Assemble the main frame structure** which the hammock will be hanging from.

The structure includes the cross beam and 4 round tube legs. The top ends of the leg posts should be covered with the plastic caps.

Use M12x75 bolts, washers and nuts to attach the legs to the cross beam.

2 bolts for every leg.

8 Bolts in total at this stage.



Frame after legs assembly :



**LAGERSTRÖM**  
OCILLA HAMMOCK 9200A  
Mounting instructions



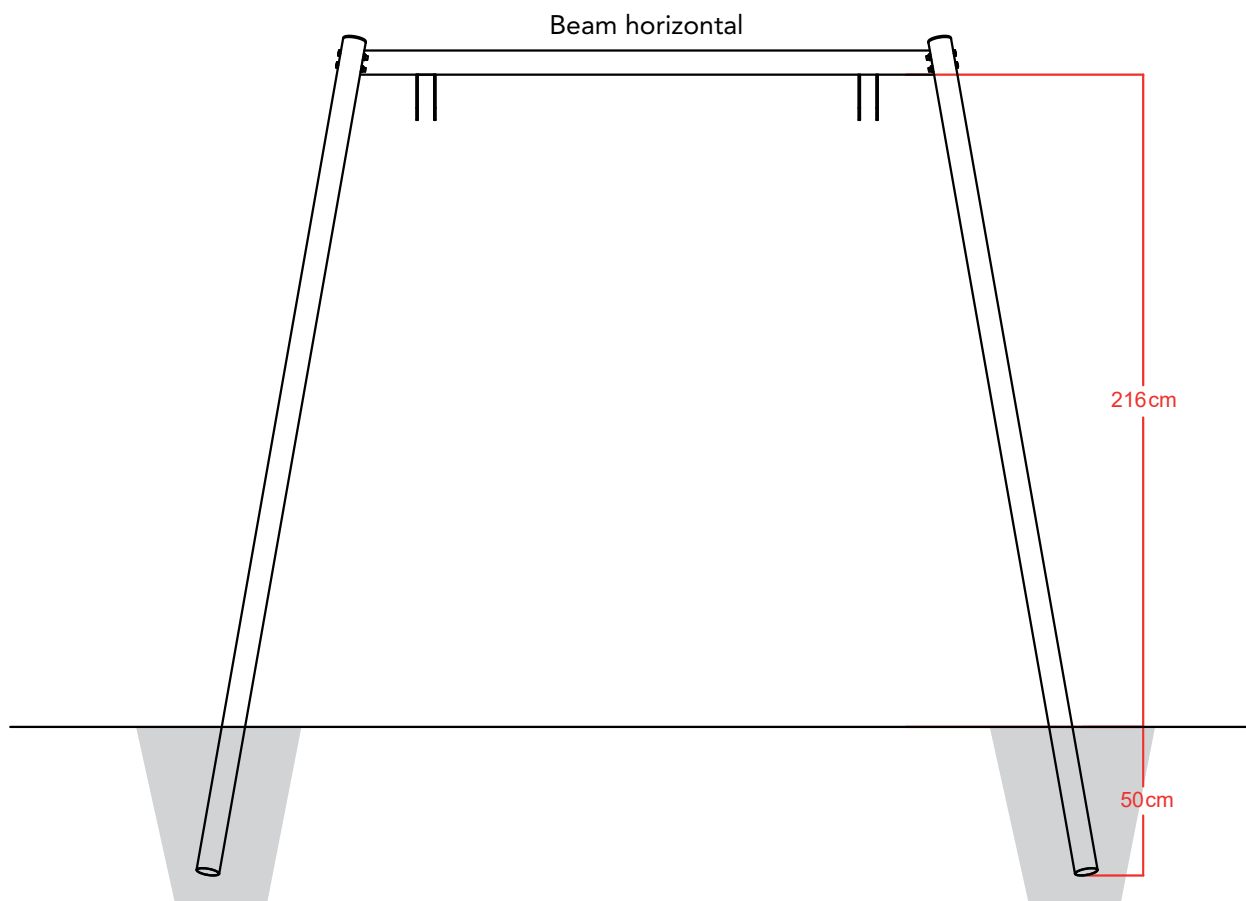
02.

**Cast the structure in the ground.**

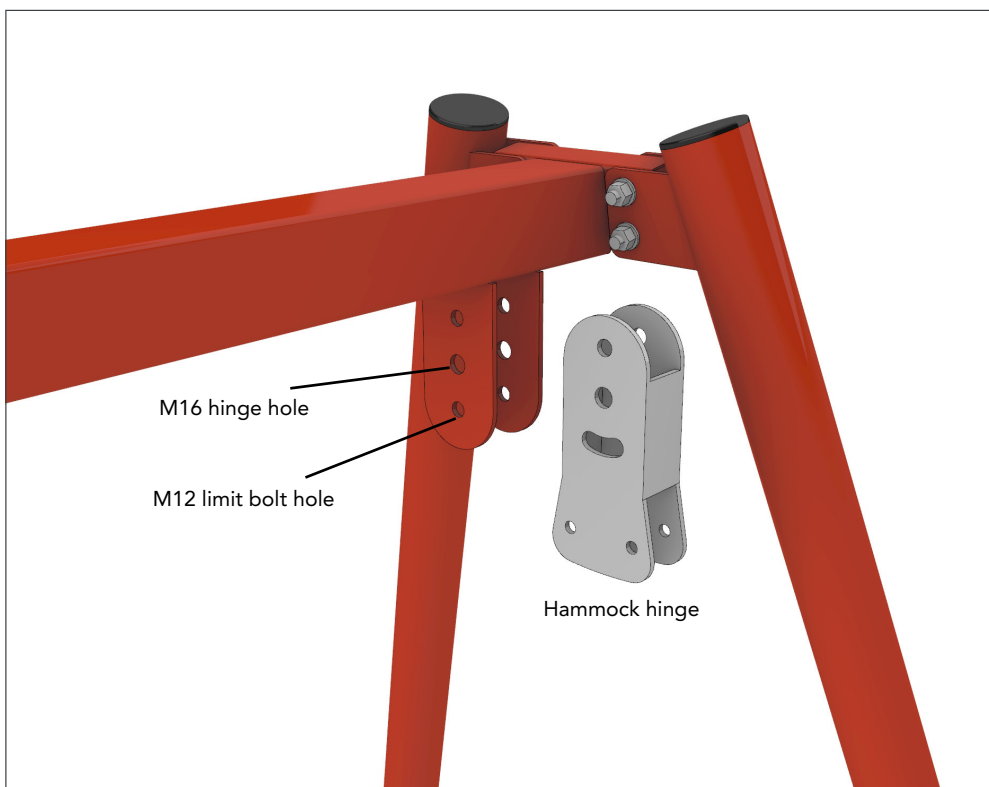
Position the structure in the chosen location. Place the leg posts in 4 holes in the ground 50cm deep. Use temporary supports to ensure the top frame is horizontal and at the right height over ground level. 216cm to the under side of the cross beam. See drawing below.

Cast concrete in the holes.  
Use cardboard cylinders if possible.

Let the concrete cure and set before removing supports.



**LAGERSTRÖM**  
OCILLA HAMMOCK 9200A  
Mounting instructions



03.

**Connection of hinges :**

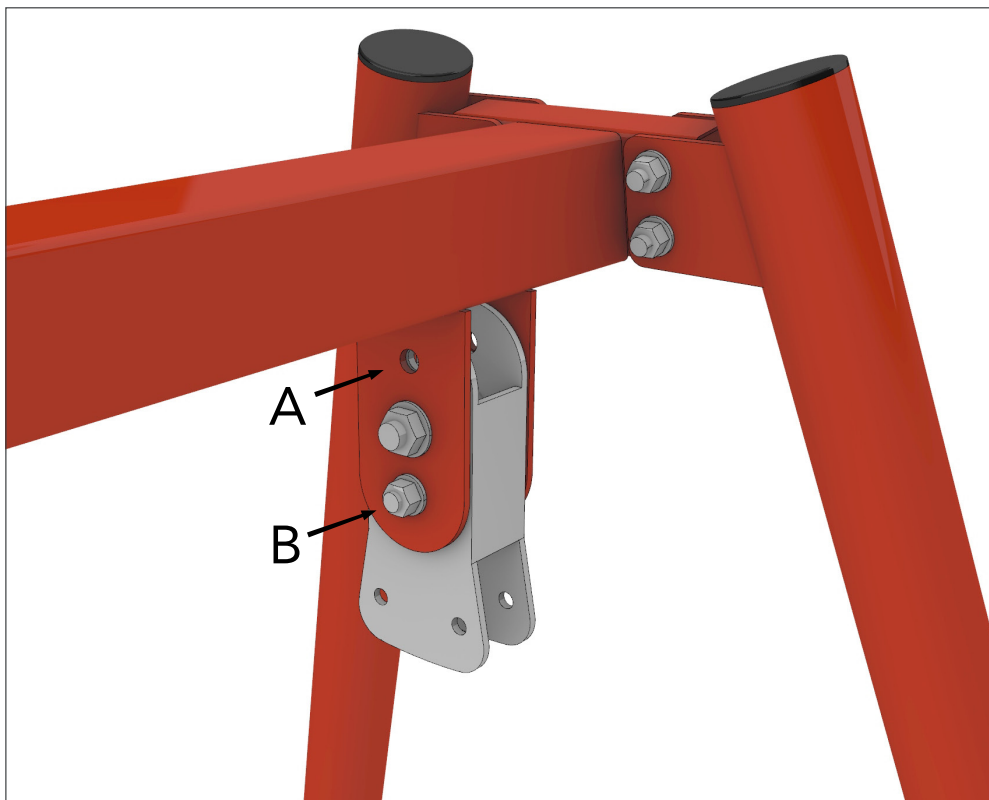
Attach the 2 hammock hinges using M16x85 bolts, washers and locking nuts. one bolt for each hinge. Connect so that the nut is properly screwed on, but the hinge is still free to move and swing.

Below the main M16 hinge bolt insert a M12x85 bolt, washers and locking nut. This Bolt is not tightened all the way either and is used to **limit** the swinging motion of the hammock.

for this stage :

2st M16x85 bolts, washers and locking nuts.

2st M12x85 bolts, washers and locking nuts.



**Note!**

**The upper M12 hole** is used for locking the swinging motion (A)

**The lower M12 hole** is used for limiting the swinging motion (B)

See illustration.

**LAGERSTRÖM**  
OCILLA HAMMOCK 9200A  
Mounting instructions

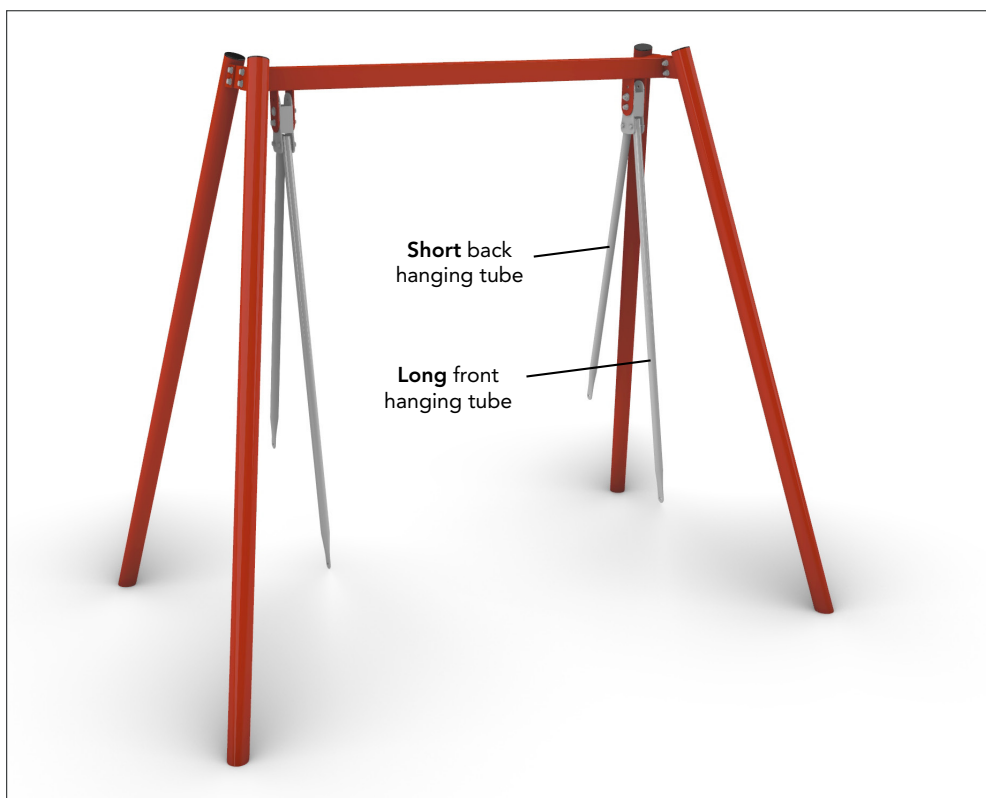


04.

**Connection of 4 hanging tubes :**

Attach the **2 kinds** of hanging tubes with M10x60 bolts nuts and washers. 1 bolt for every tube.

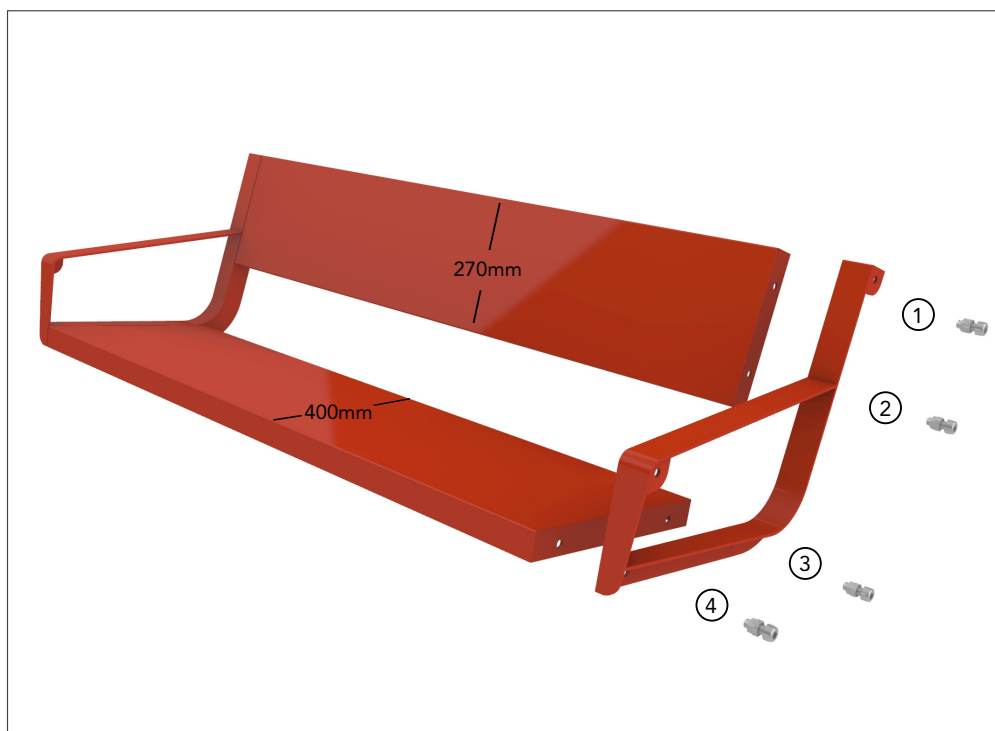
In total 4st M10x60 bolts.



**Note!**

**There are 2 kinds of hanging tubes.**  
The short tubes are used in the back.  
The longer tubes are used to hang the front of the hammock!

**LAGERSTRÖM**  
OCILLA HAMMOCK 9200A  
Mounting instructions

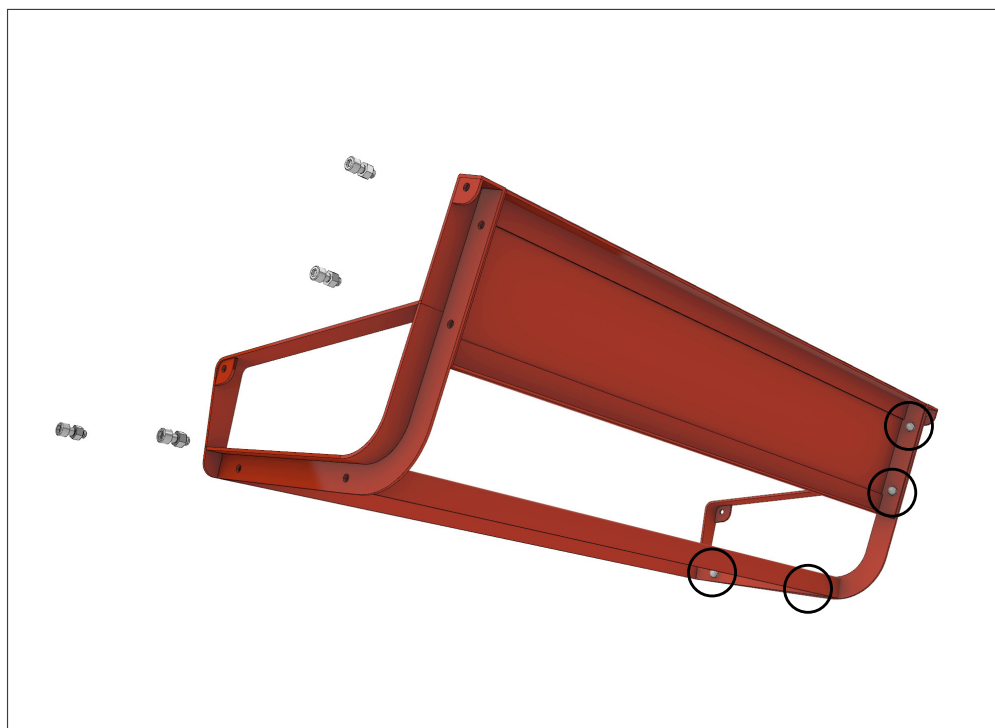


05.

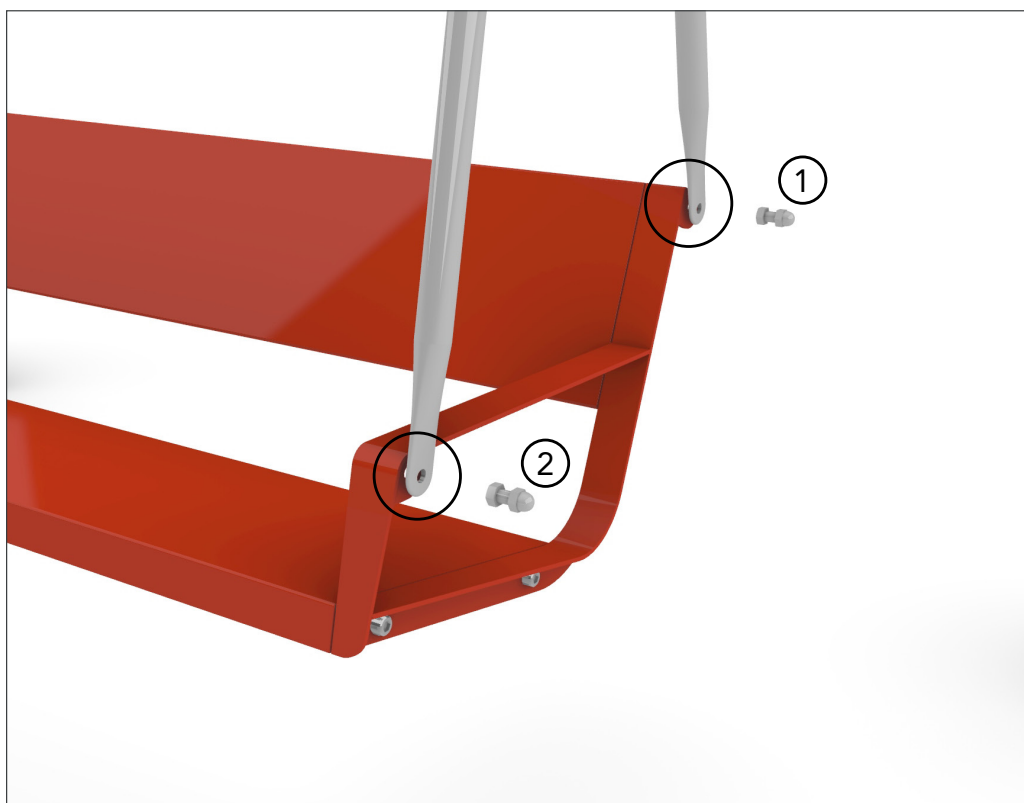
**Mounting the bench :**

Attach the seat and backrest to the 2 side gables with M12x30 bolts nuts and washers.  
The seat is 400mm wide, the backrest is 270mm wide.

4st bolts for every gable,  
In total 8st bolts at this stage.



**LAGERSTRÖM**  
OCILLA HAMMOCK 9200A  
Mounting instructions

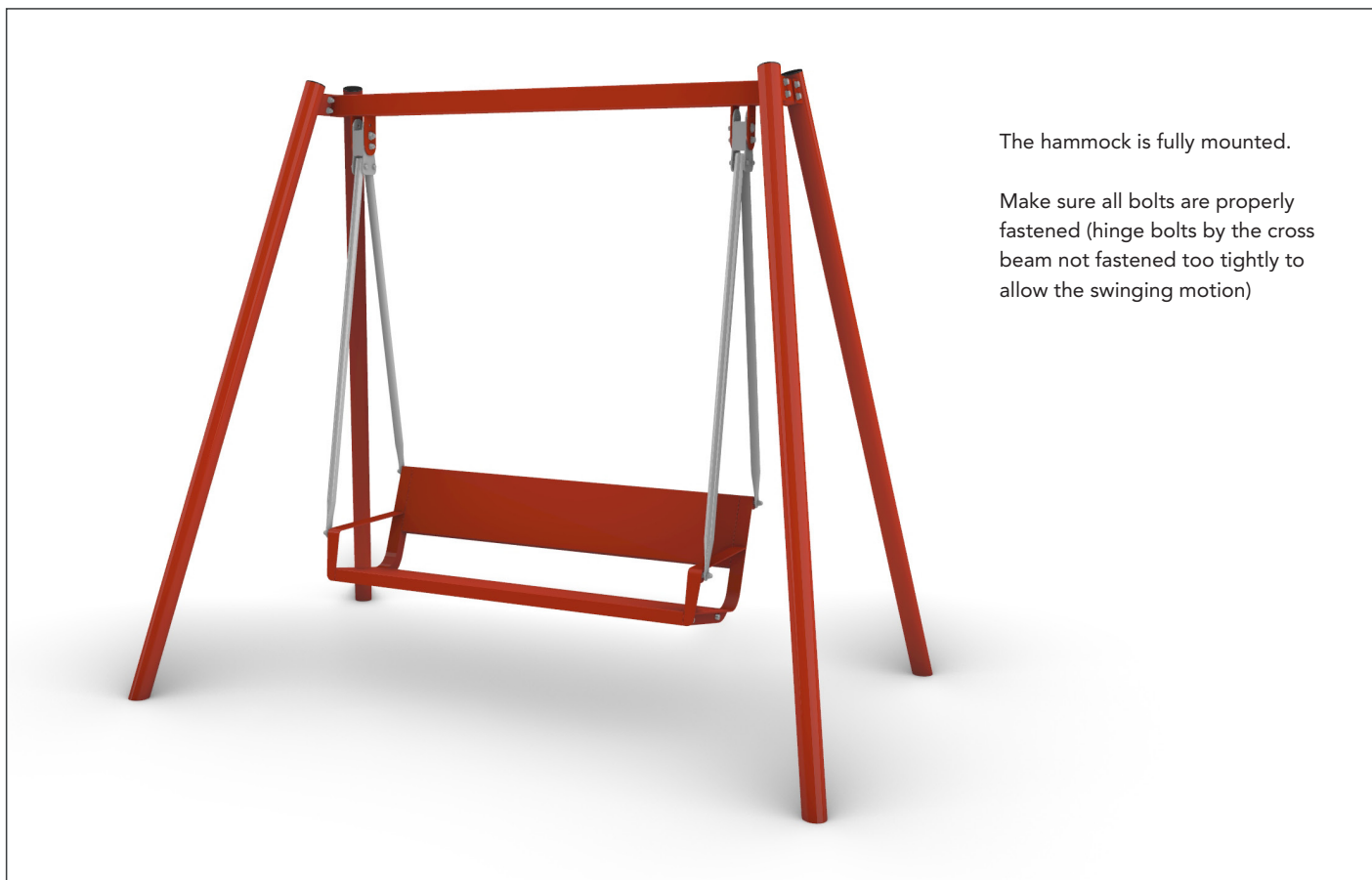


**06.**

**Attaching the bench to the hanging tubes :**

Use M12x30 bolts, nuts and washers to attach the bench to the hanging tubes. See image.

2st bolts for every side of the bench. In total 4st M12x30 bolts.



The hammock is fully mounted.

Make sure all bolts are properly fastened (hinge bolts by the cross beam not fastened too tightly to allow the swinging motion)